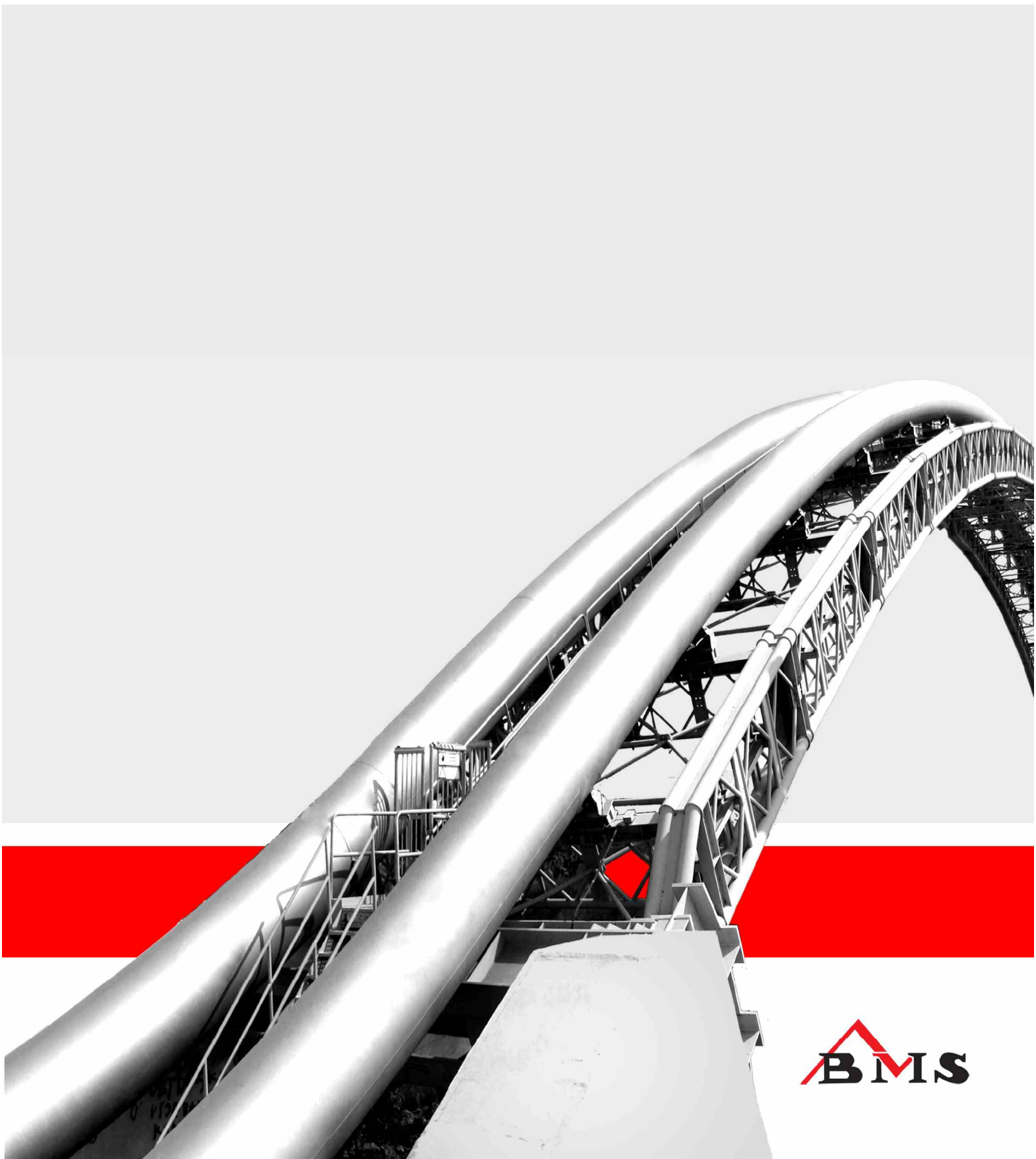


BMS Bojnanský s.r.o.

# Catalogue



**BMS**







*„ The quality of mounting and welding is the guarantee of the equipment’s safety and the quality of pipeline insulation is the guarantee of equipment’s long-lived and low-cost operation „*







The company **BMS Bojnanský**, s.r.o. aims its activities to the area of constructions, reconstructions and repairs of high-pressure long-distance pipelines and related facilities.

During its existence the company implemented the orders of such prestige customers like **Slovenský plynárenský priemysel**, a.s. (**Slovak Gas Industry**), **SLOVNAFT**, a.s., **NAFTA**, a.s. and others.

The beginnings of BMS Bojnanský activity extends to the year 1990. Since its origin the company passed through the long-run dynamic development, including transformation to the limited liability company in the year 2004. That time the company came to the recent form with flexible professional organization structure with clear and unequivocal orientation.

The specialization of **BMS Bojnanský**, s.r.o. resides in the orientation on the arrangement of complex supplies and works connecting to the exchange of collapsed operated sections of high-pressure steel pipelines and unique technological equipments (like for example the pipeline river crossings), repairs of collapsed sections of product pipelines, large dimensional ball valves with diameters from NPS 300 to 1400, technological tie-ins and with these related connection of replaced sections to existing operated pipelines. In the majority of such cases the quality of our work is proved to our customers by the pressure tests with water or air as well as by the functional tests of technological equipments.

The second area of the company aim is related to the machinery and manual application of binary insulation spray **Pro-tegol** used at the rehabilitation and repairs of insulation of the long-timely operated transit gas and oil pipelines.

In case of any requirement on other insulation systems we approach to each customer individually and at most professionally.

The third area of our activity is the complex arrangement of deliveries of construction and erection works and technically serious projects. We say about implementation of the gas pipelines of all dimensions and pressure classes, oil pipelines, water lines, high-pressure distribution stations, governor stations and suchlike.

Our company is versatily personally, technically and mechanically equipped for implementation of the mentioned works.









In many cases they are about the high-specialized works requiring the professionalism, experiences and top quality. These features, which are considered by clients as self-evident in the present day, are met by our teamwork. Our teams are created by top-class executives, welders, operators, insulators and other specialists.

In case of requirement for very specific machines and equipments we develop own engineering activity. With our experienced designers we develop own machines and equipments that are not commonly accessible on our market.

The primary target of the company **BMS Bojnanský** is the care about customer and providing of the faultless product. The independence at the deciding, care about customer from a fair-minded position, coordination and effective selection of suppliers of the goods and services, as well as the high expertise of our employees are the guarantee of the satisfied customers. The only few companies are found on the market in the given area, that are able to arrange such specific activities.









Company has the long-term orientation to reach a top quality in the technology implementation by means of certified system of production process control.

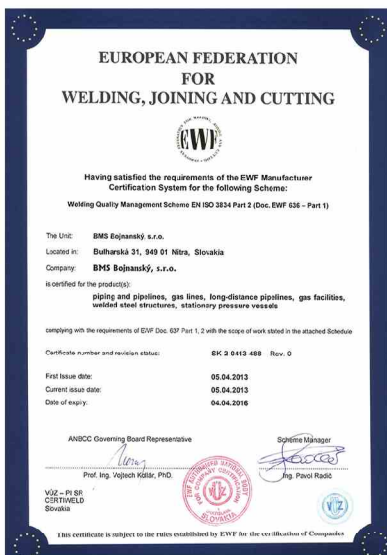
This process has culminated in the year 2004, when the integrated managing system for the following areas has been introduced after certification by the international certification organization:

**Quality** | EN ISO 9001:2008

**Environment** | EN ISO 14001:2004

**Health and safety at work** | OHSAS 18001:2007

**Welding** | STN EN 3834-2









The development of the company BMS Bojnanský, s.r.o. can be proved by the progress of the turnovers and number of regular staff in the years **2002 - 2014**

| YEAR | TURNOVER MIL. EUR | REGULAR STAFF |
|------|-------------------|---------------|
| 2002 | 1,08              | 29            |
| 2003 | 1,54              | 47            |
| 2004 | 1,47              | 24            |
| 2005 | 3,25              | 33            |
| 2006 | 4,99              | 41            |
| 2007 | 5,10              | 53            |
| 2008 | 11,54             | 72            |
| 2009 | 10,27             | 80            |
| 2010 | 12,42             | 83            |
| 2011 | 8,46              | 85            |
| 2012 | 10,83             | 94            |
| 2013 | 7,40              | 105           |
| 2014 | 4,52              | 92            |

### Professional structure of regular staff in March 2013

|                   |    |
|-------------------|----|
| Management        | 3  |
| Technicians       | 15 |
| Administration    | 7  |
| Certified welders | 13 |
| Machine operators | 15 |
| Mechanics         | 7  |
| Drivers           | 11 |
| Others            | 34 |

Out of the above mentioned staff our company collaborates with stabilized circle of skilled workers on the contractual basis for the cases of higher volume of projects. It's mainly about the technicians – specialists, certified welders and machine operators. For example currently we can provide 27 certified welders.









We are proud that the successfully completed projects and the satisfaction of our customers prove the high capabilities and responsible approach of our specialists.

**NET4GAS, s.r.o. | 2014**

High-pressure gas pipeline DN 700 Rataje-Bezměrov - replacement of defective pipes in the existing route

**NAFTA, a.s. | 2014**

Link Gajary - Baden 3 buildings with pipeline Lab - Baumgarten - GO - GU Replacing the ZS3

**SLOVNAFT, a.s. | 2014**

Reconstruction of under-crossing road I59 by product pipeline DN300 in cadastral area Jablonica

**EMERSON PROCESS MANAGEMENT, s.r.o. | 2014**

Measuring the quantity and quality of natural gas for the project will link to DN700 KS01 - PS 03 MEASURING CIRCUIT DN 300

**MONSTAV GULDAN s.r.o., | 2013**

RELOCATION OF HIGH-PRESSURE GAS PIPELINE DN 500 IN THE CROSSROAD GALANTA-SOUTH;  
RELOCATION OF HIGH-PRESSURE GAS PIPELINES DN 500, DN 100 AND DN 80 IN THE CROSSROAD MATÚŠKOVO

**SLOVENSKÉ MONTÁŽE A OPRAVY, a.s. | 2013**

REPAIR OF DEFECTS AND ANOMALIES OF PIPELINE SECTION JUR NAD HRONOM – SEČIANKY, ROUTES PC6

**EUSTREAM a.s. | 2013**

REPAIRS OF DEFECTS OF CORROSION PROTECTION COATING OF TRANSMISSION GAS PIPELINES DN 1200 WITHOUT INTERRUPTION OF OPERATION

**EUSTREAM, a.s. | 2013**

EARTHWORKS FOR NEEDS OF REPAIRS AND MAINTENANCE OF TECHNOLOGICAL FACILITIES OF TRANSIT GAS PIPELINES AND THE RELATED SERVICES

**KVV zrt. | 2013**

SLOVAK-HUNGARIAN GAS PIPELINE INTERCONNECTOR – HUNGARIAN PART:  
HUNGARY-SLOVAKIA INTERCONNECTING (VECSÉS – BALASSAGYARMAT) DN 800, PN 75 GAS TRANSMISSION PIPELINE

**EUSTRAM, a.s. | 2013 - 2014**

SLOVAK-HUNGARIAN GAS PIPELINE INTERCONNECTOR – SLOVAK PART:  
GAS PIPELINE PN 75, DN 800 KS 03 VEĽKÉ ZLIEVCE – BORDER SK/H, SLOVENSKÉ ĎARMOTY

**DENYS ALPINE v.o.s. | 2012**

GAZELLE PROJECT, HP GAS PIPELINE DN 1400 BRANDOV – ROZVADOV, LOT 2

**PLYNOSTAV - REGULACE PLYNU, a.s. | 2013**

GAZELLE PROJECT, HP GAS PIPELINE DN 1400 BRANDOV – ROZVADOV, LOT 1









**SLOVENSKÝ PLYNÁRENSKÝ PRIEMYSEL, a.s. | 2011**

MAT/08097 Relocation of the I. and II. line of the high-pressure gas pipeline DN 1200 - Laborec River

**SLOVENSKÝ VODOHOSPODÁRSKY PODNIK, štátny podnik | 2011**

Repair of the gate door's bottom sill of the left lock chamber on SVD G-N, st. Gabčíkovo

**MORAVSKÝ PLYNOSTAV, a.s. | 2011**

Package of pipelines of gas underground storage Třanovice

**SLOVNAFT, a.s. | 2010**

Repair of pipeline PC4

**NAFTA a.s. | 2010**

Assembly of the valves – connection gas pipelines ZS4

**EUSTREAM, a.s. | 2010**Construction of the distribution and metering station Gajary (932 719 m<sup>3</sup>/h)**MONSTAV GULDAN s.r.o., | 2010**

Relocation of the high-pressure gas pipeline – MŠP DN 700 PN 63 - Tesárske Mlyňany

Relocation of the high-pressure gas pipeline – MŠP DN 700 PN 63 - section in km 1,5 – 3,5

Relocation of the high-pressure gas pipeline DN 300 PN 40 – Šaľa - Jelšovce in km 3,556

Relocation of the high-pressure gas pipeline DN 500 PN 63 - Tesárske Mlyňany

**SLOVENSKÝ PLYNÁRENSKÝ PRIEMYSEL a.s. | 2008 - 2009**

Relocation of the I. and II. Line of high-pressure gas pipeline DN 1200 – Nitra River

**EUSTREAM a.s. | 2008**

Repairs of the corrosion faults on the transit gas pipelines DN 1200 without operation shut-down

**SPP PREPRAVA a.s. | 2008 - 2009**Construction of high-pressure distribution and metering station Špačince – area Ivanka pri Nitre (300 000 m<sup>3</sup>/h)**MONSTAV GULDAN s.r.o. | 2008**

Relocation of the gas pipeline DN 500 PN 40 ČOV Galanta

**SLOVENSKÝ PLYNÁRENSKÝ PRIEMYSEL a.s. | 2007 - 2008**

High-pressure connection DN 1200 PN 80 valve station TU 52 Vysoká pri Morave – border Slovakia / Austria

**AMDAT s.r.o. | 2007**

Reconstruction of high-pressure gas pipeline DN 200 PN 25 – Bzince pod Javorinou

**PSJ HYDROTRANZIT, a.s. | 2007**

MAT/07056 Relocation of the I. and II. line of the high-pressure gas pipeline DN 1200 - Ipeľ River









**SPP PREPRAVA a.s. | 2007**

Repair of the failures of the anti-corrosion insulation of the transit gas pipelines DN 1200 PN 63 without operation shut-down

**SLOVENSKÝ PLYNÁRENSKÝ PRIEMYSEL a.s. | 2006**

Erection fit of the scraper trap DN 1000-TAG2, tie-ins inlet lines DN 1200 PN 75 and the solution of condensate separation, station TU 52 – Vysoká pri Morave

**LOSTAV ČSFR spol. s r.o. | 2006**

Reconstruction of the oil pipeline Kolín DN 50 DN 300

**SPP PREPRAVA a.s. | 2006**

Repair of the failures of the anti-corrosion insulation of the transit gas pipelines DN 1200 without operation shut-down

**SLOVENSKÝ PLYNÁRENSKÝ PRIEMYSEL a.s. | 2005**

Emergency reconstruction of high-pressure gas pipeline DN 500

**TRNAVSKÁ STAVEBNÁ SPOLOČNOSŤ a.s. | 2004**

Earthing and erection Works related to the relocations of high-pressure gas pipeline DN 100 and DN 150 with connection to the existing gas pipelines using TDW equipments

**SLOVENSKÝ PLYNÁRENSKÝ PRIEMYSEL a.s. | 2003 - 2004**

Repair of the failures of the anti-corrosion insulation of the transit gas pipelines DN 1200, DN 1400 without operation shut-down

**VELES | 2003 - 2002**

Failures repair on the transit gas pipeline at the normal gas pipeline operation – valve station TU27 Kamenné Kosihy to TU30 Tehla

Repair of the failures of the anti-corrosion insulation of the transit gas pipelines DN 1200 without operation shut-down

The following important companies have been our customers till the year **2001** :

**Slovnaft a.s. | Duslo a.s. | PETROCHEMA a.s. | Chemicelulóza Žilina | SCP PAPIER, a.s. | Povodie Dunaja, štátny podnik BRATISLAVA Povodie Váhu, odštepny závod 1 | Povodie Hrona, š.p. | Pivovary Topvar, a.s. | Pivovar Karšay spol. s r. o. | Pivovar Hurbanovo | Pivovar Martin | Pivovar GEMER, spol.s.r.o. | Severoslovenské vodárne a kanalizácie, a.s. Bratislavská vodárenská spoločnosť, a.s. | Hydrostav a.s. | CESTY NITRA a.s. | MSA a.s. | Rádiotelekomunikácie etc.**









**BENDING MACHINES**

|  |      |
|--|------|
| Bending machine UNI MUG (CRC-Evans type) for pipes DN 800 to DN 1200 | 1 ks |
| Bending machine UNI MUG (CRC-Evans type) for pipes DN 250 to DN 700  | 1 ks |

**EQUIPMENT FOR SPRAYING OF THE INSULATION STUFFS (PROTEGOL, COPON)**

|   |      |
|---|------|
| Spraying equipment DIO 1200 with nozzle ring for pipeline DN 1200 | 2 pc |
| Holiday test device ISOTEST 3P                                    | 4 pc |

**AIR COMPRESSORS**

|  |      |
|--|------|
| Compressor PD 400 XAS 230  | 1 pc |
| Compressor ATLAS COPCO (8 bar – 800m <sup>3</sup> /h)                | 2 pc |
| Compressor INGERSOLL RAND XHP 750 (20 bar – 1200m <sup>3</sup> /hod) | 2 pc |
| Compressor MUG 100.750D (100 bar – 800m <sup>3</sup> /hod)           | 2 pc |
| Compressor LMF VHGD 4822 W10 (120 bar – 400-600m <sup>3</sup> /hod)  | 1 pc |

**TRANSPORT MACHINERY – TILTERS, TOWING VEHICLES, PIPE HAULAGE VEHICLES**

|  |      |
|--|------|
| Truck IVECO ML 95EE15WR – lorry with loader      | 1 pc |
| Truck MERCEDES BENZ 3346A – lorry with loader    | 1 pc |
| Truck MERCEDES BENZ 3346A – tilter               | 1 pc |
| Towing vehicle MERCEDES BENZ ACTROS              | 1 pc |
| Trailer GOLDHOFFER S2T H7 (60t)                  | 1 pc |
| Truck T815 - tilter                              | 3 pc |
| Truck T815 + pipe haulage trailer ACHLEITNER SN2 | 2 pc |









**WELDING AND CUTTING EQUIPMENT**

|  |      |
|--|------|
| Tracked mobile four-post pipe welder PW 28-805         | 3 pc |
| Mobile workshop IVECO with four welding posts          | 2 pc |
| Welding machine ESAB CADDY LHN 250                     | 5 pc |
| Welding machine ESAB CADDY LHN 251                     | 5 pc |
| Welding machine ESAB ORICON 4000                       | 4 pc |
| Welding machine EWM PICO 300                           | 4 pc |
| Welding machine EWM TETRIX 300                         | 4 pc |
| Welding machine EWM PICO 230                           | 2 pc |
| Welding machine MIG 400                                | 3 pc |
| Welding machine MIG 230                                | 2 pc |
| Welding machine LINCOLN invertec V 350 - PRO           | 9 pc |
| Welding machine LINCOLN invertec STT-II                | 5 pc |
| Plasma arc cutting device (with clean cut up to 40 mm) | 2 pc |
| Electric generator PDCT GSL 160 PN 60 kW               | 3 pc |

**LIFTING TRACKED AND WHEEL MACHINES**

|                                     |      |
|-------------------------------------|------|
| Pipelayer KOMATSU D155 (60t)        | 2 pc |
| Pipelayer CAT 594 (90t)             | 2 pc |
| Pipelayer CAT 583 (60t)             | 3 pc |
| Pipelayer CAT 572 (40t)             | 3 pc |
| Truck crane AD160 T-148 (18t)       | 1 pc |
| Truck crane LIEBHERR LTM 1070 (70t) | 1 pc |
| Truck crane LIEBHERR LTM 1050 (50t) | 1 pc |

**EARTHWORKS TRACKED AND WHEEL MACHINES**

|   |      |
|---|------|
| Track excavator JCB 210 LC                        | 2 pc |
| Track excavator JCB 240 LC                        | 2 pc |
| Track excavator JCB 300                           | 1 pc |
| Track excavator HYUNDAI 290 with auxiliary device | 1 pc |
| - Pick hammer                                     |      |
| - Hydraulic hammer for interlocking piling        |      |
| Wheel excavator UDS 214.1 T815                    | 1 pc |
| Wheel excavator JCB4X (loader)                    | 3 pc |
| Track dozer CAT D6R                               | 2 pc |
| Road Roller CAT 583C                              | 1 pc |



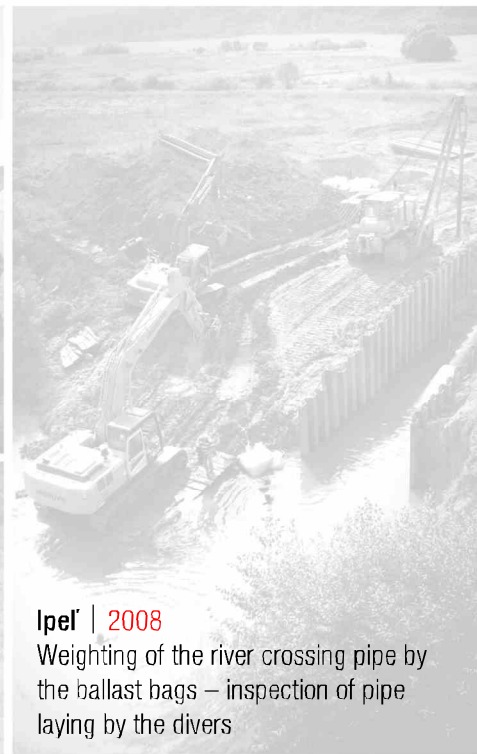




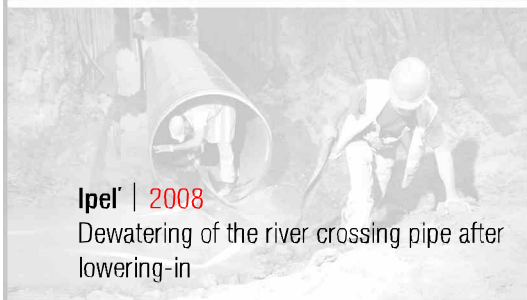
**Vysoká | 2007 - 2008**  
Erection in the trench – four-pipe section



**Vysoká | 2007 - 2008**  
Protection of pipe with sprayed Protegol insulation



**Ipel | 2008**  
Weighting of the river crossing pipe by the ballast bags – inspection of pipe laying by the divers



**Ipel | 2008**  
Dewatering of the river crossing pipe after lowering-in



**Vysoká | 2007 - 2008**  
Erection in the trench – four-pipe section



**Ipel | 2008**  
Cold bending of the pipes DN 1200









**Slanec | 2007**  
Welding of the double pipe section



**Slanec | 2007**  
Pipe cutting – bevel preparation



**Slanec | 2007**  
Protection of the pipeline by Tatrutex –  
arrangement before backfilling



**Slanec | 2007**  
Welding of the tie-in in the erection ditch

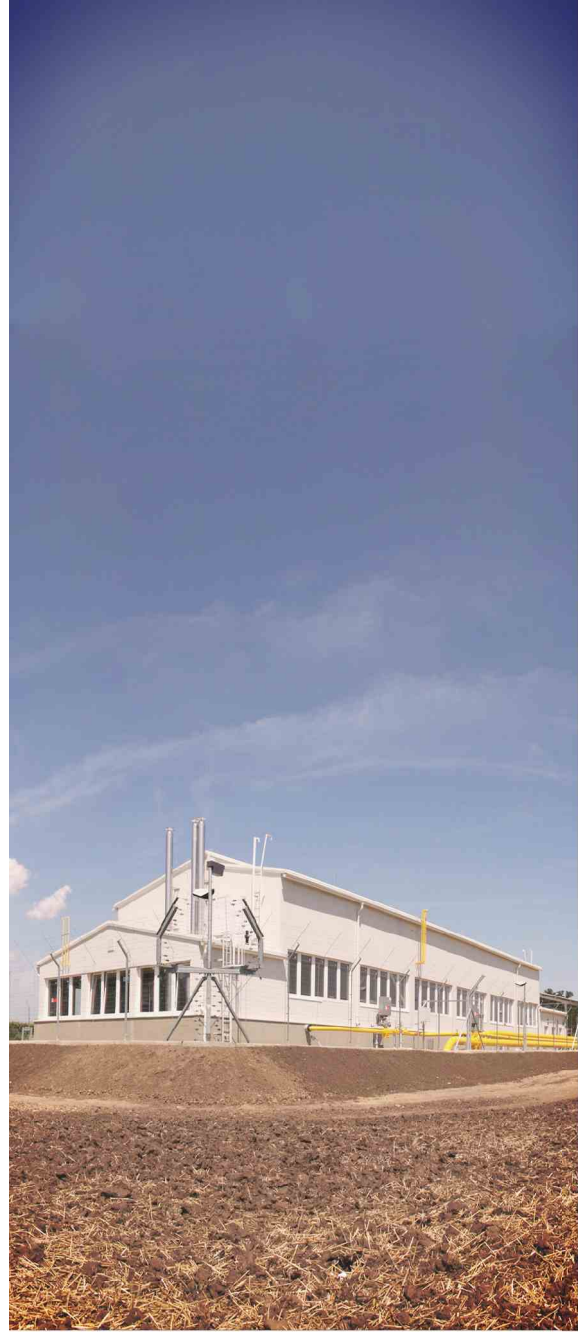


**Špačince | 2008 - 2009**  
Distribution station of the high-pressure gas  
pipeline



**Špačince | 2008 - 2009**  
Filling hall of the high-pressure gas pipeline distribution station





PHOTOS



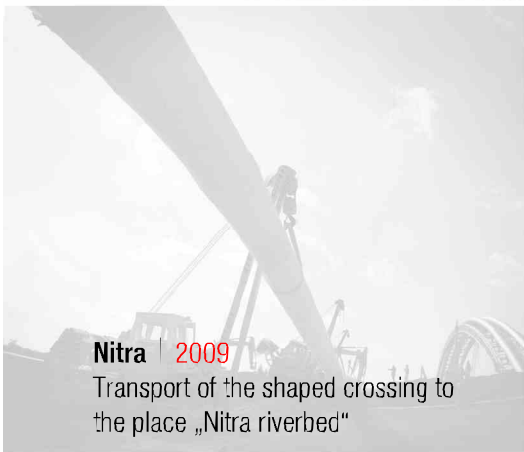
BMS





**Nitra | 2009**

Retraction of the crossing's fittings – welding part



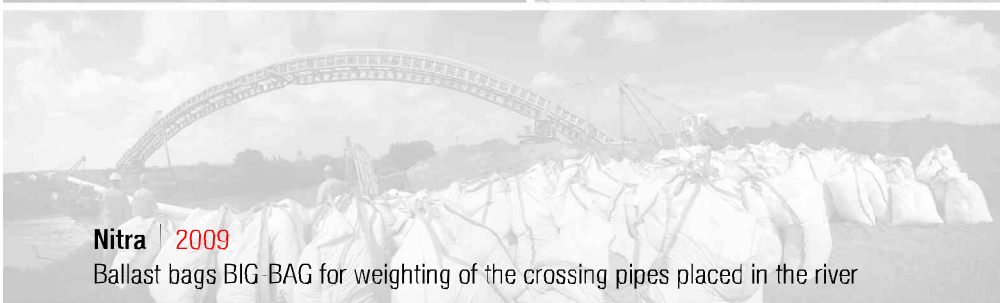
**Nitra | 2009**

Transport of the shaped crossing to the place „Nitra riverbed“



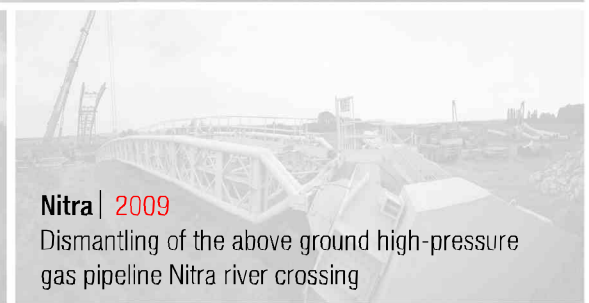
**Nitra | 2009**

Transport of the shaped crossing to the place „Nitra riverbed“



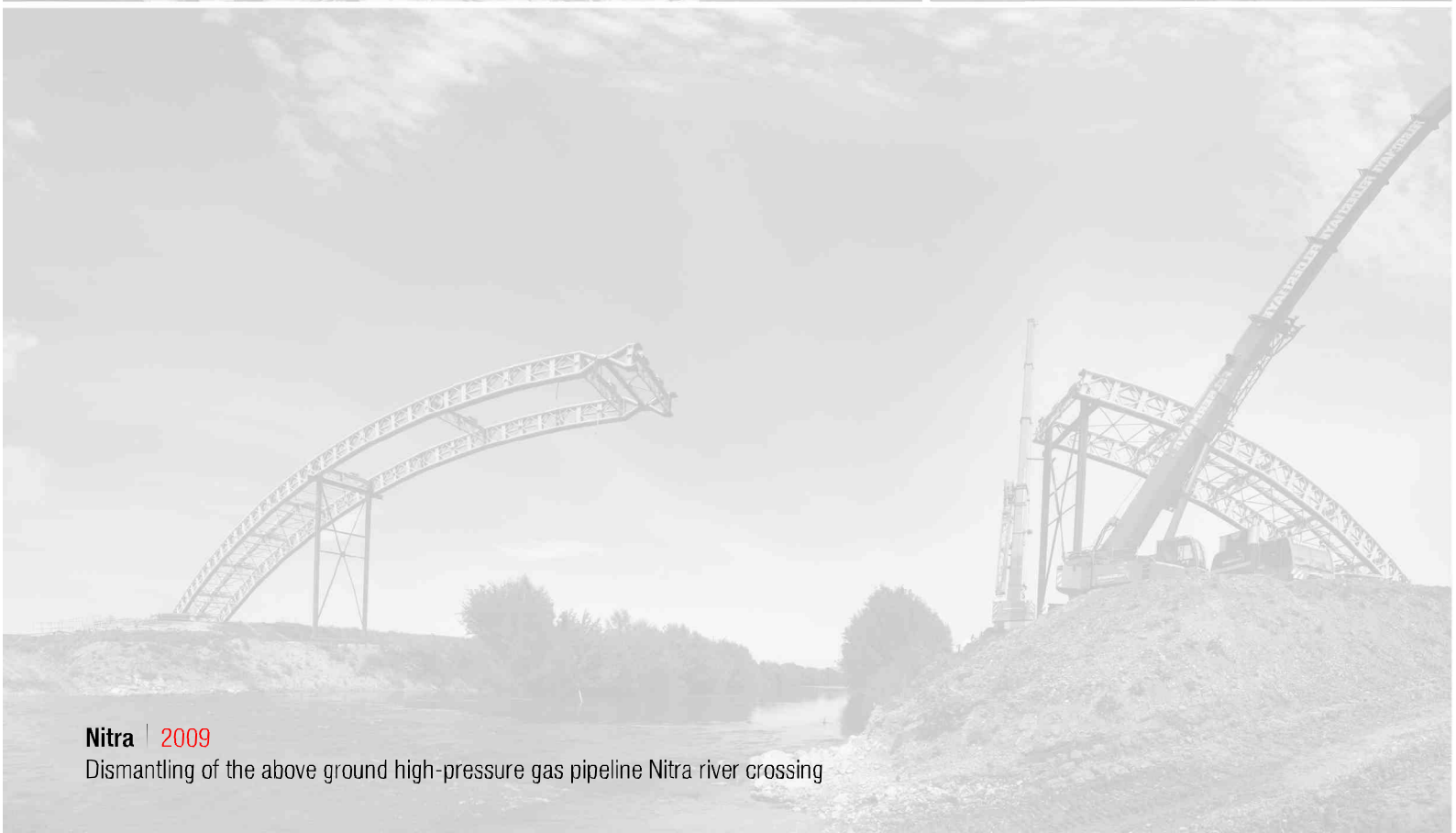
**Nitra | 2009**

Ballast bags BIG BAG for weighting of the crossing pipes placed in the river



**Nitra | 2009**

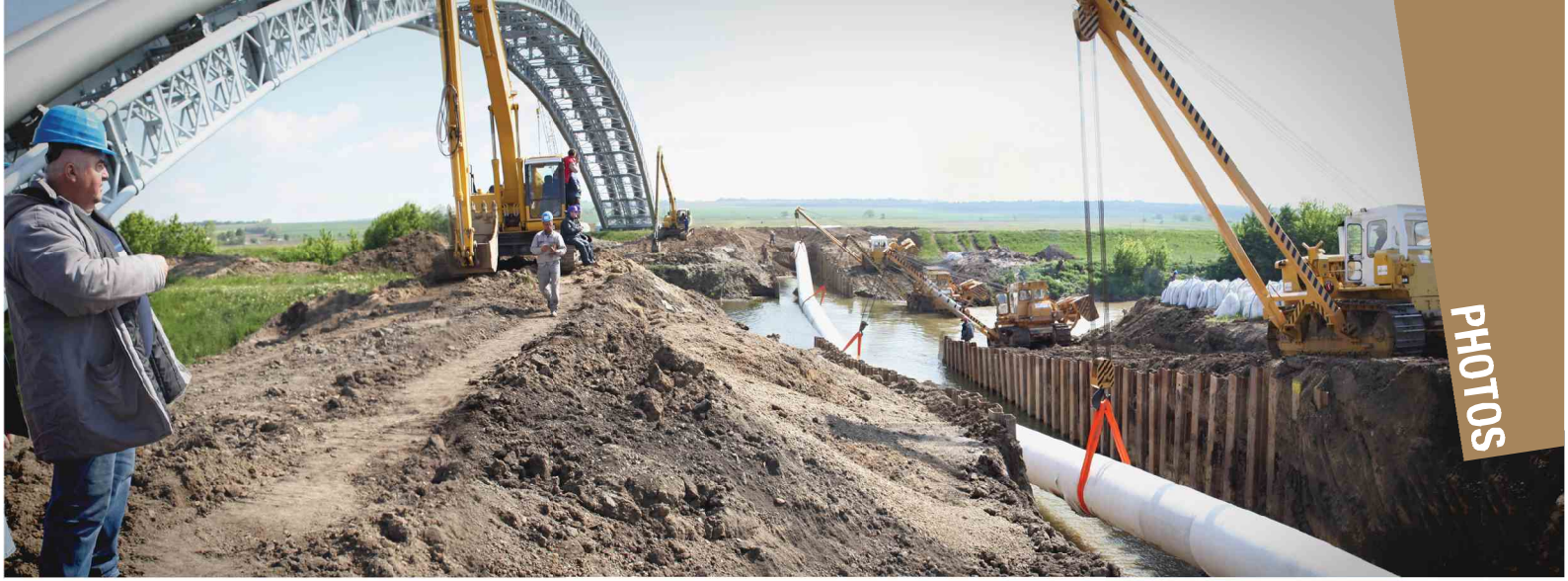
Dismantling of the above ground high-pressure gas pipeline Nitra river crossing



**Nitra | 2009**

Dismantling of the above ground high-pressure gas pipeline Nitra river crossing

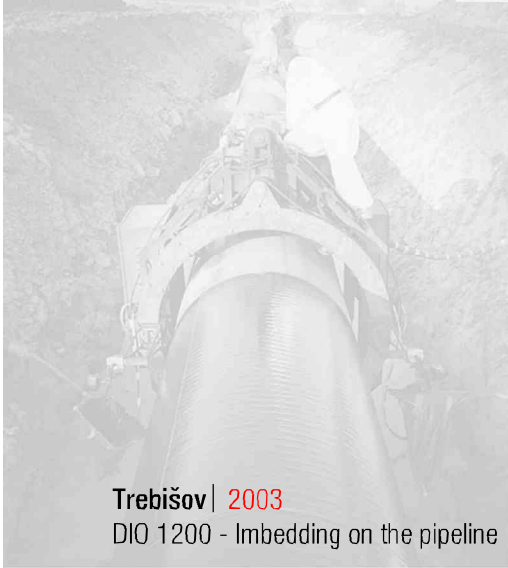




PHOTOS



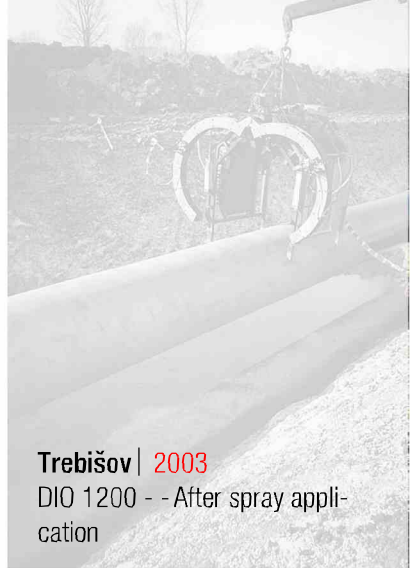




**Trebišov | 2003**  
DIO 1200 - Imbedding on the pipeline



**Trebišov | 2003**  
DIO 1200 - - In operation



**Trebišov | 2003**  
DIO 1200 - - After spray appli-  
cation



**Nitra R1 | 2009**  
Four-post welding tractor VICMA –  
welding of the pipeline DN 700



**Nitra R1 | 2009**  
Transport and stringing of the pipes



**Nitra R1 | 2009**  
Welding head group DN 700

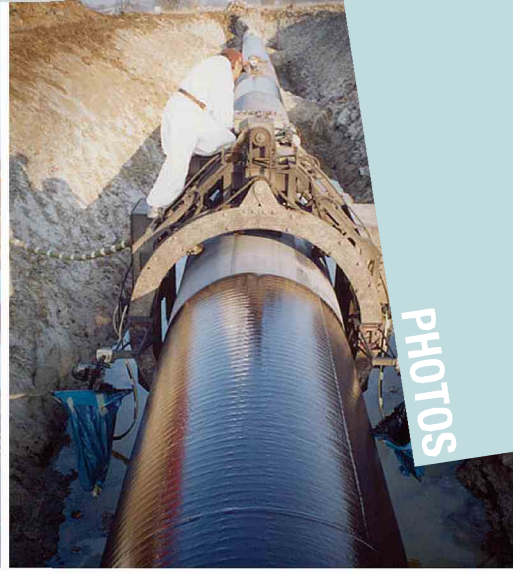


**Bučany | 2004**  
Spraying set PROFIMIX 2000. Preparation of the  
equipment for application of the spraying PRO-  
TEGOL insulation



**Nitra R1 | 2009**  
Erection of the pipeline – welding head group





PHOTOS



BMS





**Gajary | 2010**  
Construction of the distribution and metering station Gajary



**Gajary | 2010**  
Construction of the distribution and metering station Gajary



**Gajary | 2010**  
Construction of the distribution and metering station Gajary

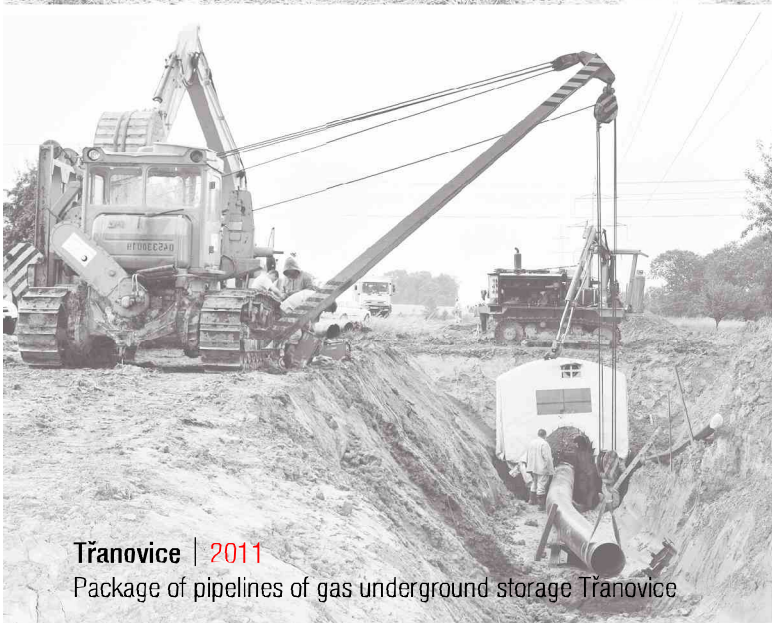




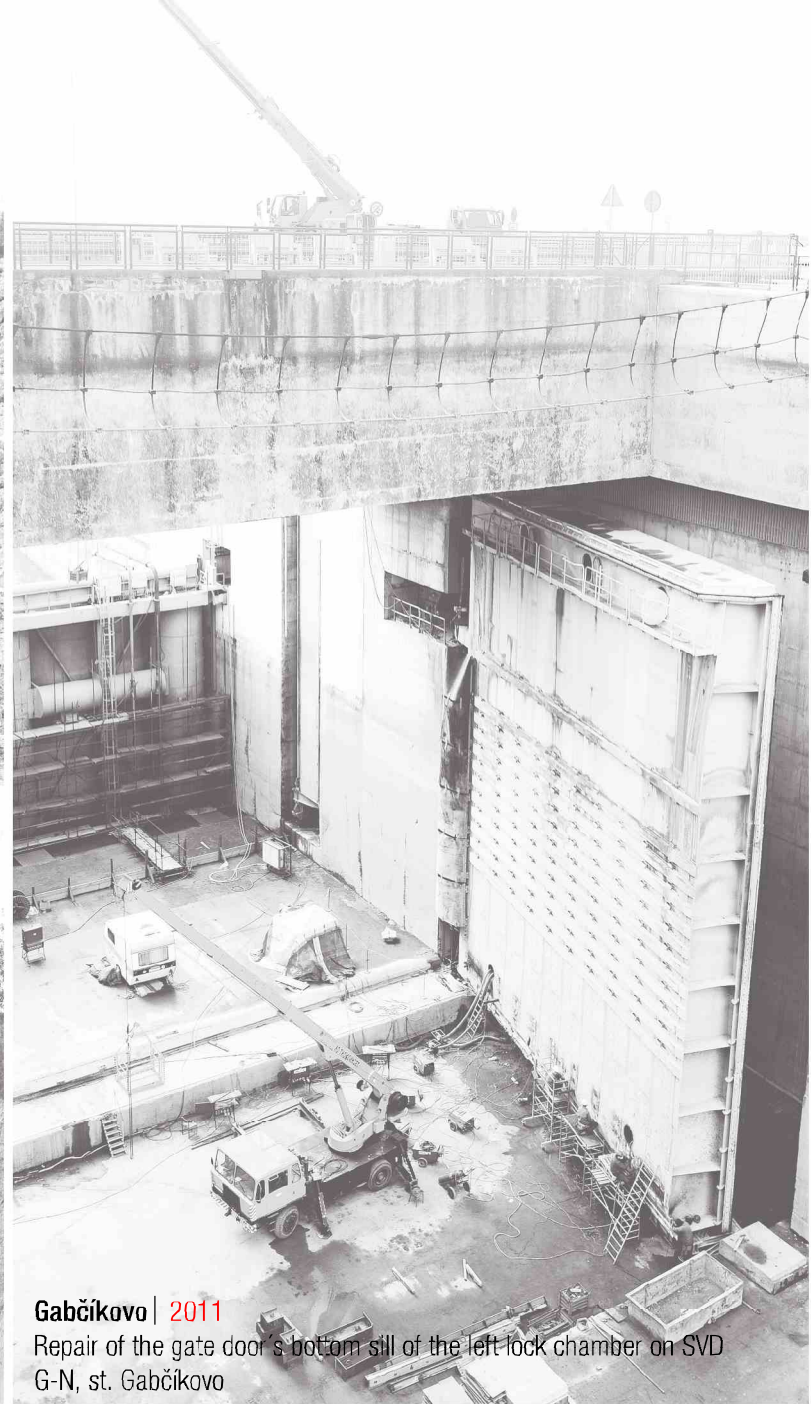




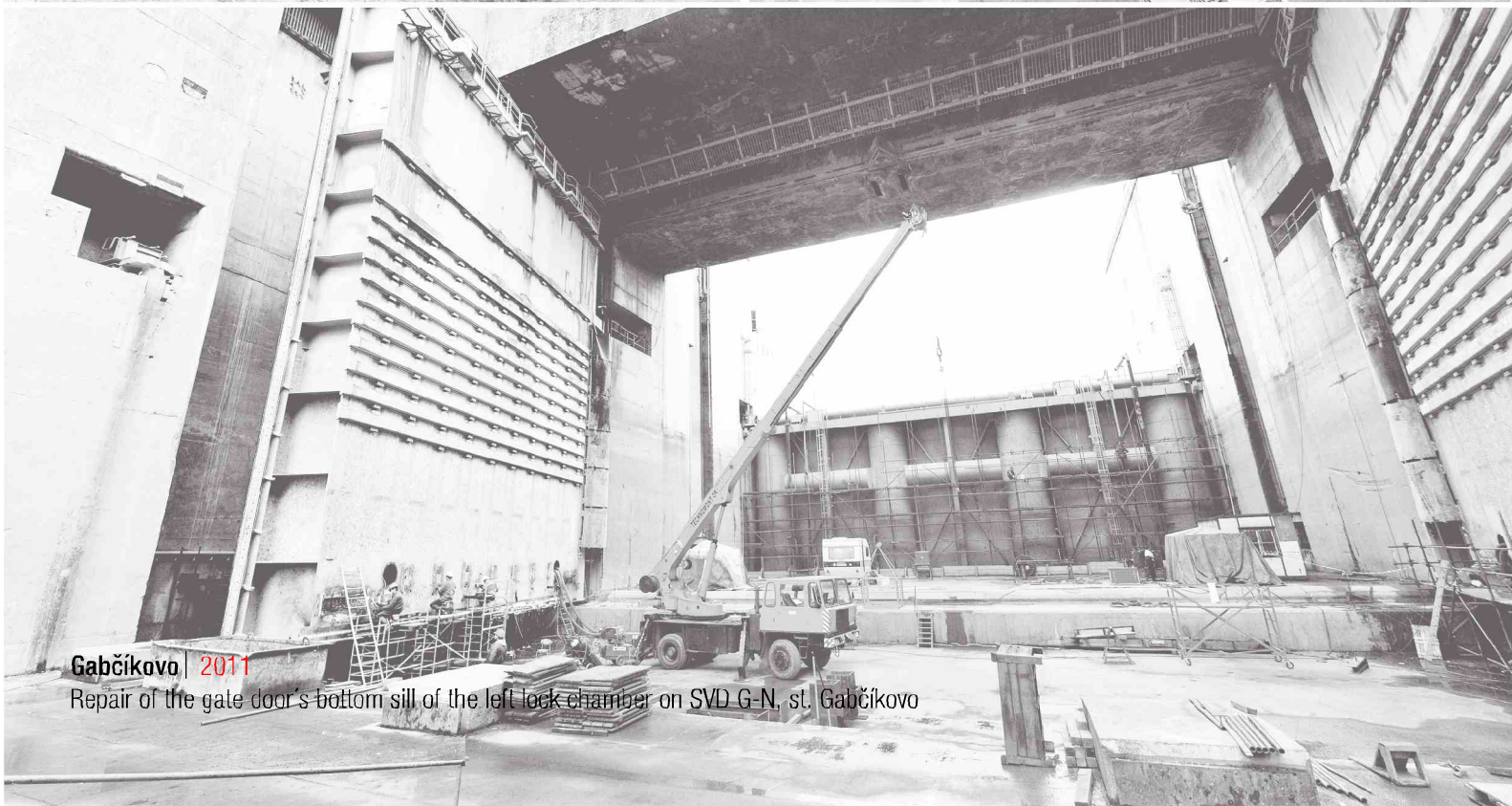
**Třanovice | 2011**  
Package of pipelines of gas underground storage Třanovice



**Třanovice | 2011**  
Package of pipelines of gas underground storage Třanovice

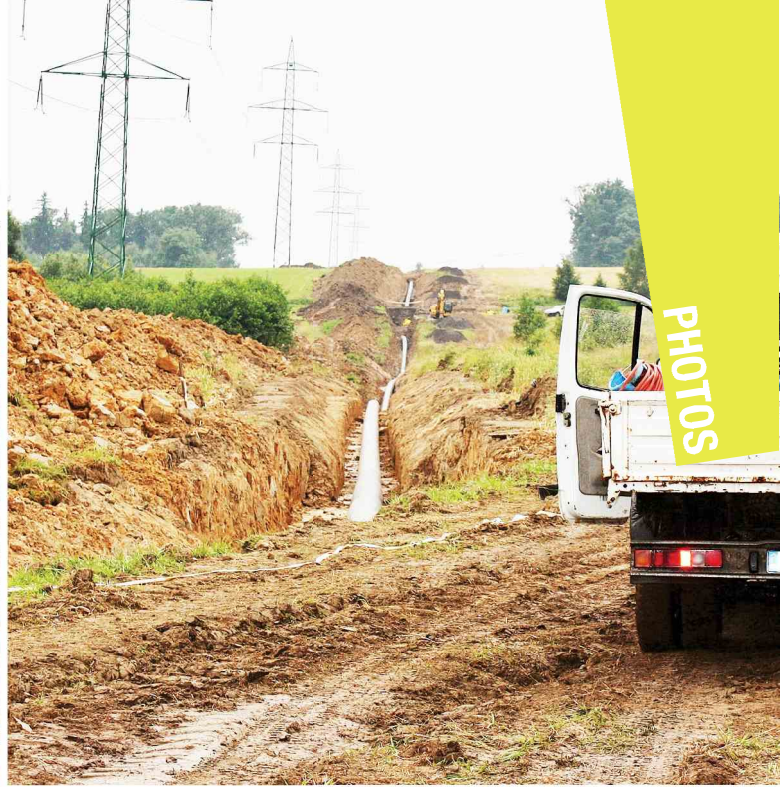


**Gabčíkovo | 2011**  
Repair of the gate door's bottom sill of the left lock chamber on SVD G-N, st. Gabčíkovo

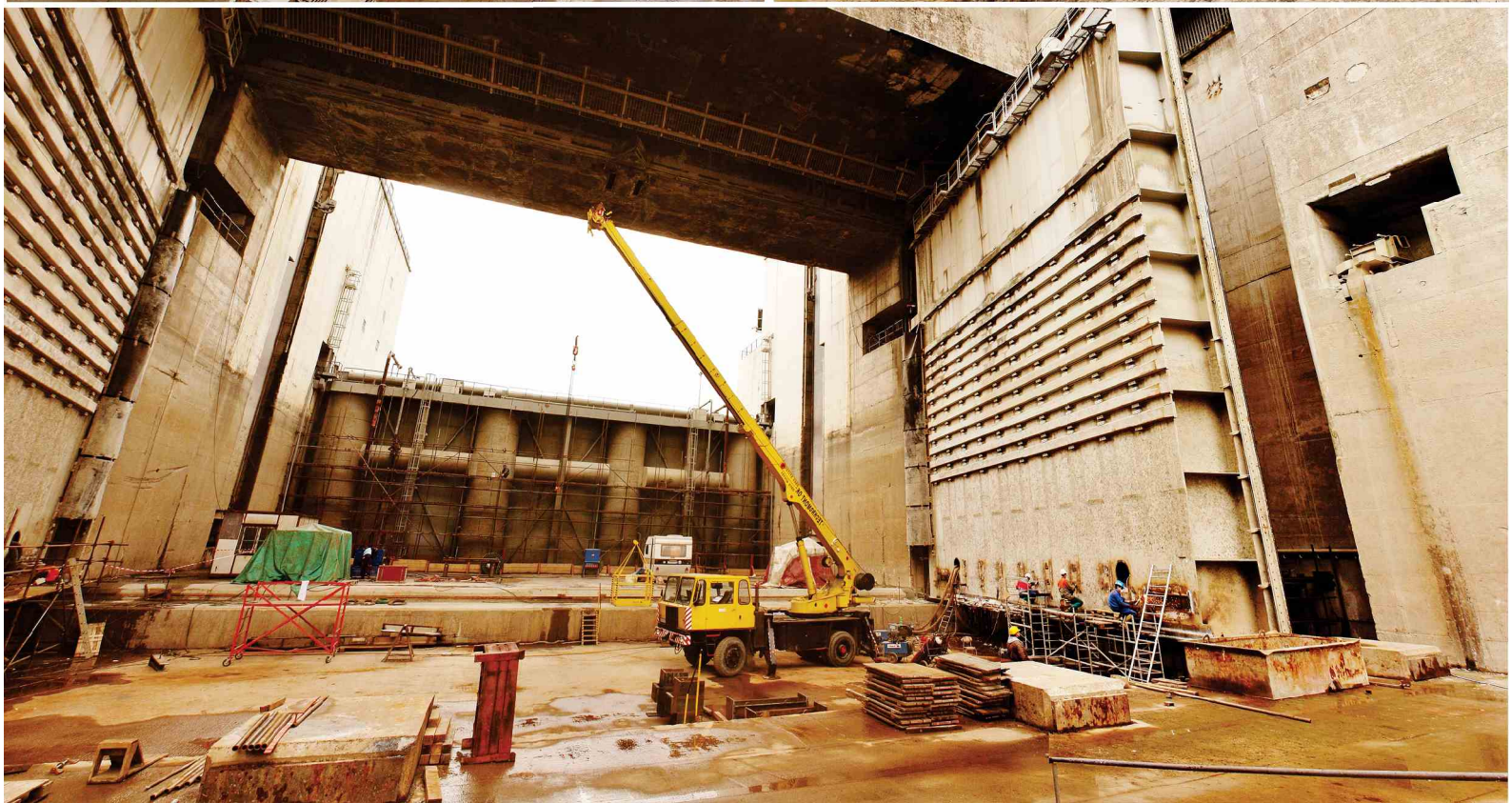
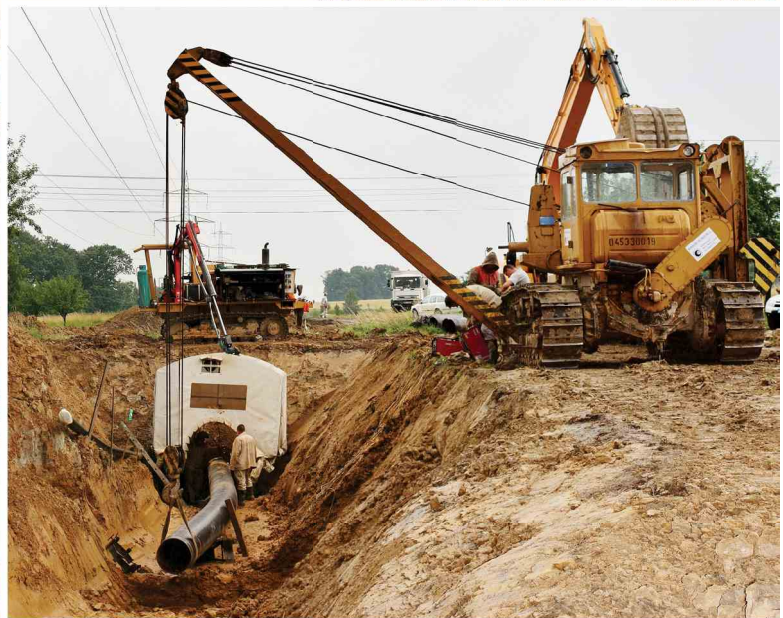


**Gabčíkovo | 2011**  
Repair of the gate door's bottom sill of the left lock chamber on SVD G-N, st. Gabčíkovo





PHOTOS





# BMS





**SEAT OF THE COMPANY**

BMS Bojnanský s.r.o.

Bulharská 31

949 01 Nitra

Slovak Republic

**Company Registration No.** | 36546941

**VAT Registration No.** | SK 2020153905

**PRODUCTION FACILITY**

**Adress** | Piesková 1254, 951 35 Veľké Zálužie, okr. Nitra

**Tel.** | 00421 37 6592 810, 00421 37 6592 812

**Fax.** | 00421 37 6592 814

**E-mail** | [bmsnitra@bmsnitra.sk](mailto:bmsnitra@bmsnitra.sk)

**Website** | [www.bmsnitra.sk](http://www.bmsnitra.sk)





